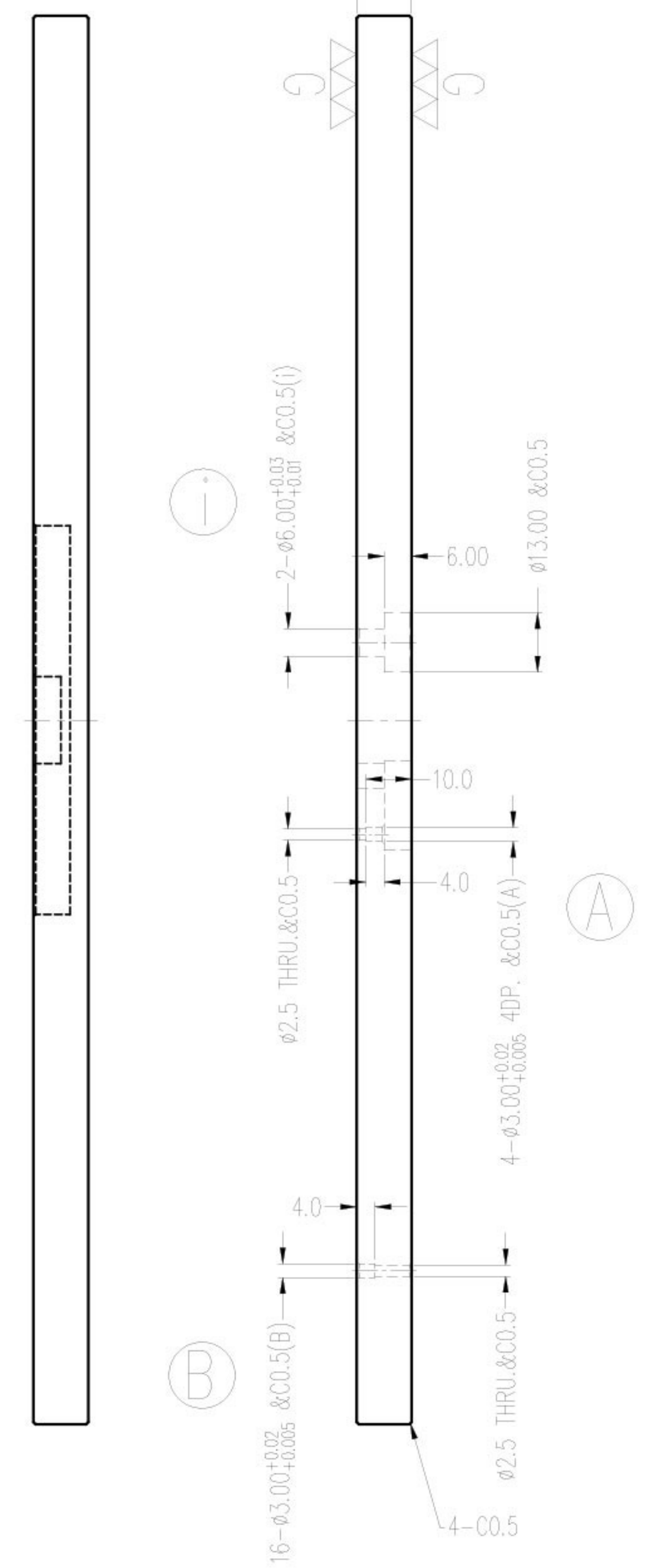
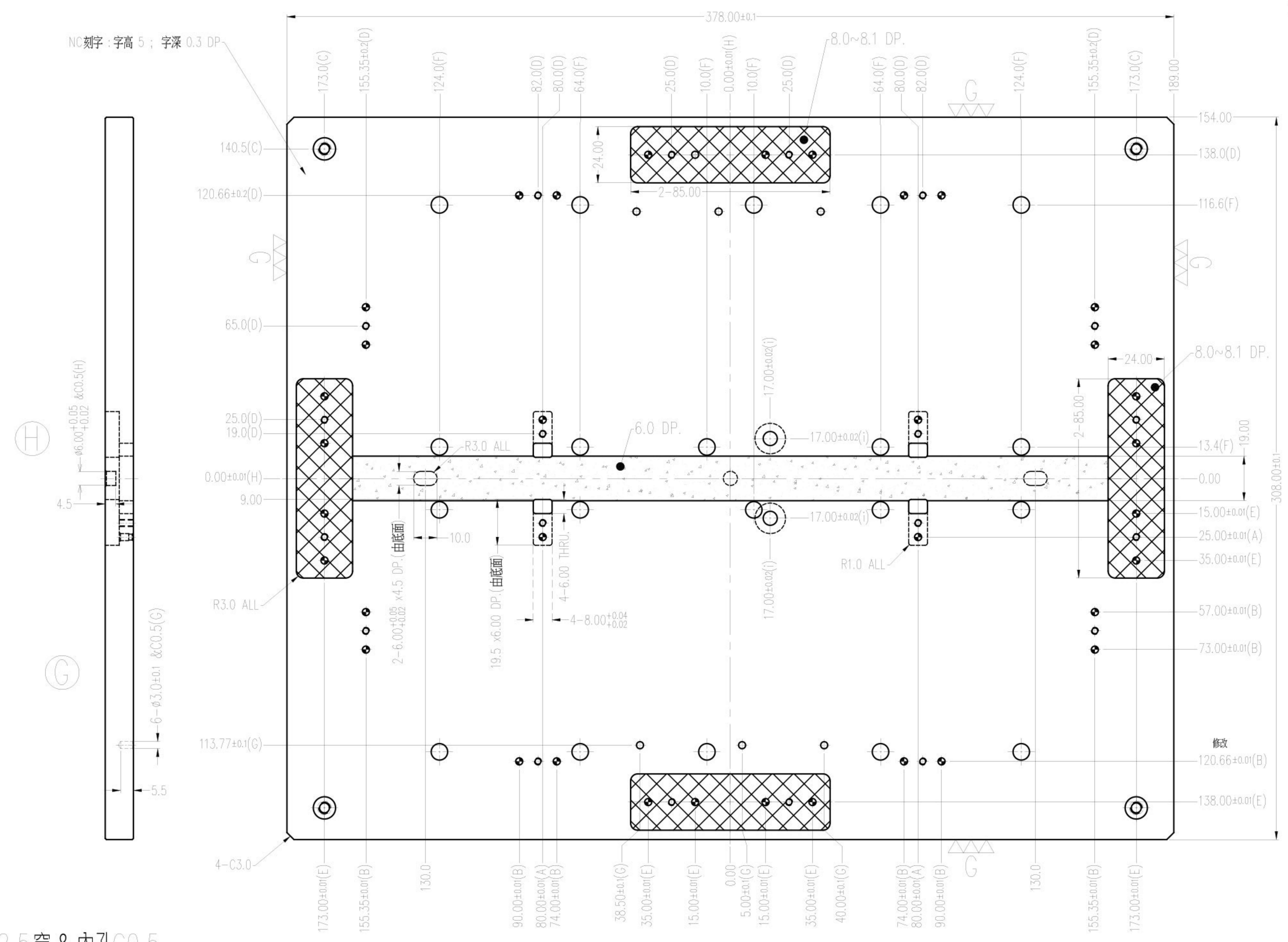
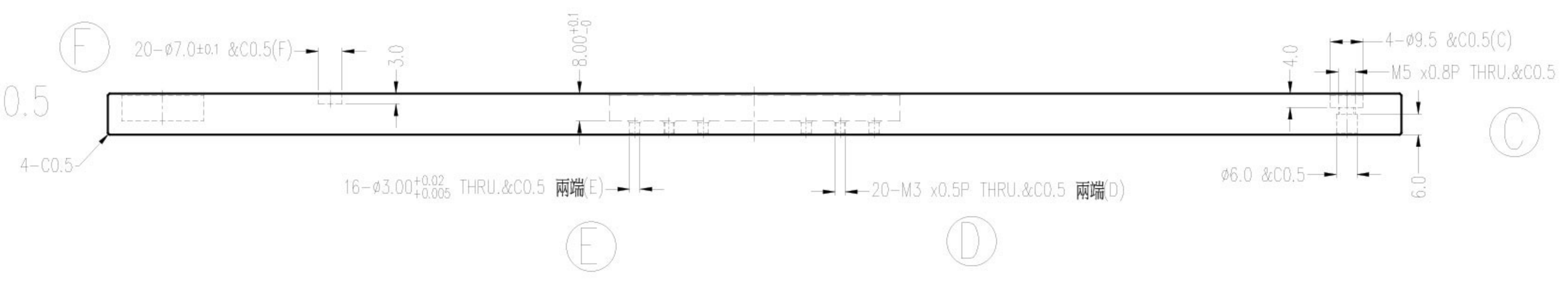


全周倒角 C0,5



- A: 4-∅3.0<sup>+0.02</sup>/<sub>+0.005</sub> 沉頭孔深 4.0 & ∅2.5穿 & 內孔C0.5
- B: 16-∅3.0<sup>+0.02</sup>/<sub>+0.005</sub> 沉頭孔深 4.0 & ∅2.5穿 & 內孔C0.5
- C: 4-∅9.5 沉頭孔深 4.0 & M5穿 & ∅6.0深 6.0 & 內孔C0.5
- D: 20-M3 穿 & 內孔C0.5
- E: 16-∅3.0<sup>+0.02</sup>/<sub>+0.005</sub> 穿 & 內孔C0.5
- F: 20-∅7.0±0.1 沉頭孔深 3.0 & 內孔C0.5
- G: 6-∅3.0±0.1 沉頭孔深 5.5 & 內孔C0.5
- H: 1-∅6.00<sup>+0.05</sup>/<sub>+0.02</sub> 沉頭孔深 4.5 & 內孔C0.5
- i: 2-6.00<sup>+0.03</sup>/<sub>+0.01</sub> 穿 & ∅13.00 沉頭孔深 6.0 & 內孔C0.5



修改